

WEATHER PROOF MONOBLOC INDUSTRIAL ENCLOSURE

Features:

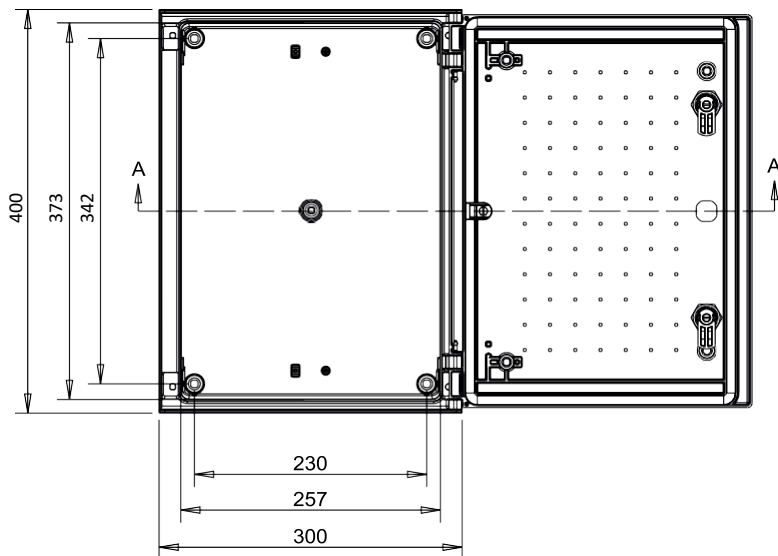
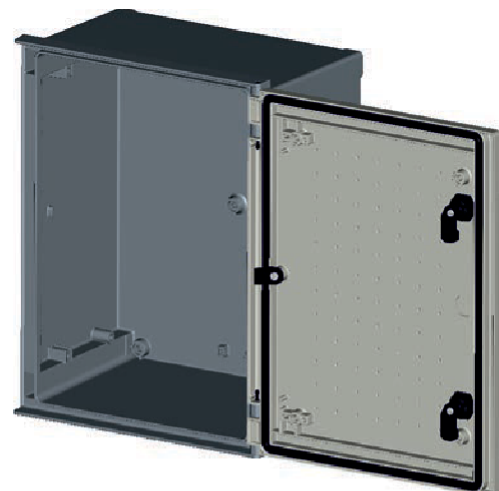
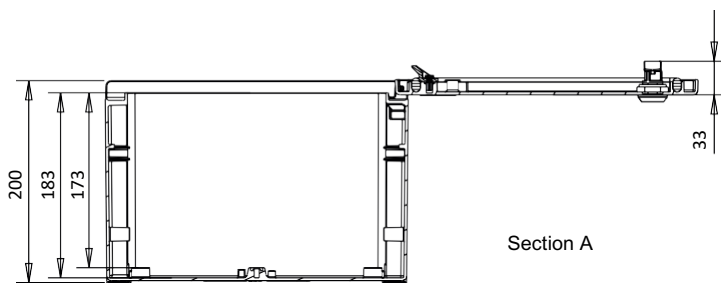
- Enclosures made from Fiber Glass Reinforced Polyester, moulded by hot compression.
- Colour Light Grey RAL 7035.
- Degree of protection IP 66 UNE 20324 (EN 60529).
- Self-extinguishability: 960° test withstanding, Halogen free, double insulation and no electrical contact risks.
- Compliance with IEC62208 enclosure standard.
- Suitable for Indoor & Outdoor use.
- Anti- Intruder hinges system.
- UV Resistant and suitable for harsh environments.
- Light weight provides an easy installation.
- 2 lock with double-bar insert for better protection.
- Large door opening (180°). Version with plain or glazed door.
- Accessories like Mounting Plate, Wall Brackets, Pole Mount Brackets, Pad Lock mount, Door Retainer Clip etc. are available on request.



Detailed Description:

Part No:	Description	Height*Width*Depth	Weight
NYS-WPE-432	WEATHER PROOF INDUSTRIAL ENCLOSURE	400*300*200 mm	3.60 kg

WEATHER PROOF MONOBLOC INDUSTRIAL ENCLOSURE



WEATHER PROOF MONOBLOC INDUSTRIAL ENCLOSURE

Electrical Specifications

Nominal tension Direct current up to: 1500 Vdc

Nominal tension Alternate current up to: 1000 Vac

Environmental Specifications

Minimum Temperature: -30° C

Maximum Temperature: +70° C

Compression Resistance: 100 Kg

IP Protection Rating: IP 66

IK Impact Resistance Degree: IK 10

Installation and Assembly

Indoor Installation: Yes

Outdoor Installation: Yes

Direct Floor Mounting: No

Wall Mounting: Yes

Pole Mounting: Yes

WEATHER PROOF MONOBLOC INDUSTRIAL ENCLOSURE

Ordering Information

Part No./Model No.	Description
NYS-WPE-432	Weather Proof Industrial Enclosure, 400 mm(H)*300 mm(W)*200 mm(D)
WPE-MP-432	Galvanized Mounting Plate, 360 mm(H)*248 mm(W)* 2 mm (T)
WPE-WB	Wall Brackets (4 Nos), 67*28*25mm
WPE-PMB-X3	Pole Mount Bracket c/w Stainless Steel Strap
WPE-PL	Padlock Mount, 64*40*20mm
WPE-DR	Door Retainer Clip, 60*10*10mm

WEATHER PROOF MONOBLOC INDUSTRIAL ENCLOSURE

Features:

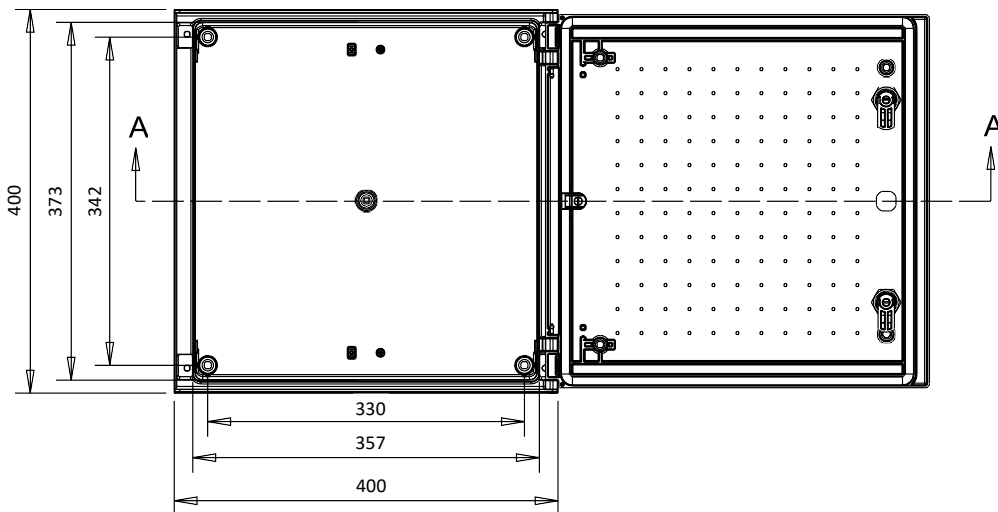
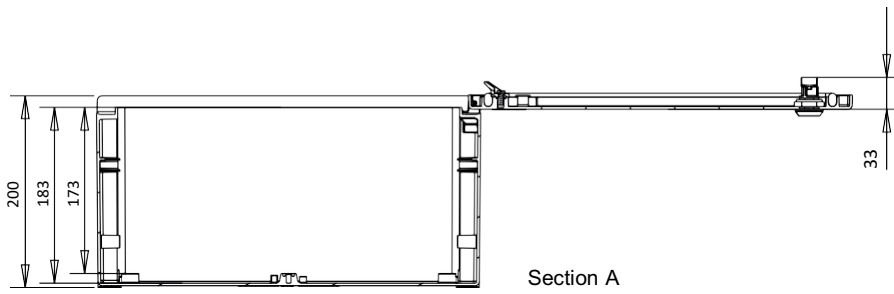
- Enclosures made from Fiber Glass Reinforced Polyester, moulded by hot compression.
- Colour Light Grey RAL 7035.
- Degree of protection IP 66 UNE 20324 (EN 60529).
- Self-extinguishability: 960° test withstanding, Halogen free, double insulation and no electrical contact risks.
- Compliance with IEC62208 enclosure standard.
- Suitable for Indoor & Outdoor use.
- Anti- Intruder hinges system.
- UV Resistant and suitable for harsh environments.
- Light weight provides an easy installation.
- 2 lock with double-bar insert for better protection.
- Large door opening (180°). Version with plain or glazed door.
- Accessories like Mounting Plate, Wall Brackets, Pole Mount Brackets, Pad Lock mount, Door Retainer Clip etc. are available on request.



Detailed Description:

Part No:	Description	Height*Width*Depth	Weight
NYS-WPE-442	WEATHER PROOF INDUSTRIAL ENCLOSURE	400*400*200 mm	4.35 kg

WEATHER PROOF MONOBLOC INDUSTRIAL ENCLOSURE



WEATHER PROOF MONOBLOC INDUSTRIAL ENCLOSURE

Electrical Specifications

Nominal tension Direct current up to: 1500 Vdc

Nominal tension Alternate current up to: 1000 Vac

Environmental Specifications

Minimum Temperature: -30° C

Maximum Temperature: +70° C

Compression Resistance: 100 Kg

IP Protection Rating: IP 66

IK Impact Resistance Degree: IK 10

Installation and Assembly

Indoor Installation: Yes

Outdoor Installation: Yes

Direct Floor Mounting: No

Wall Mounting: Yes

Pole Mounting: Yes

WEATHER PROOF MONOBLOC INDUSTRIAL ENCLOSURE

Ordering Information

Part No./Model No.	Description
NYS-WPE-442	Weather Proof Industrial Enclosure, 400 mm(H)*400 mm(W)*200 mm(D)
WPE-MP-442	Galvanized Mounting Plate, 360 mm(H)*348 mm(W)* 2 mm (T)
WPE-WB	Wall Brackets (4 Nos), 67*28*25mm
WPE-PMB-X4	Pole Mount Bracket c/w Stainless Steel Strap
WPE-PL	Padlock Mount, 64*40*20mm
WPE-DR	Door Retainer Clip, 60*10*10mm

WEATHER PROOF MONOBLOC INDUSTRIAL ENCLOSURE

Features:

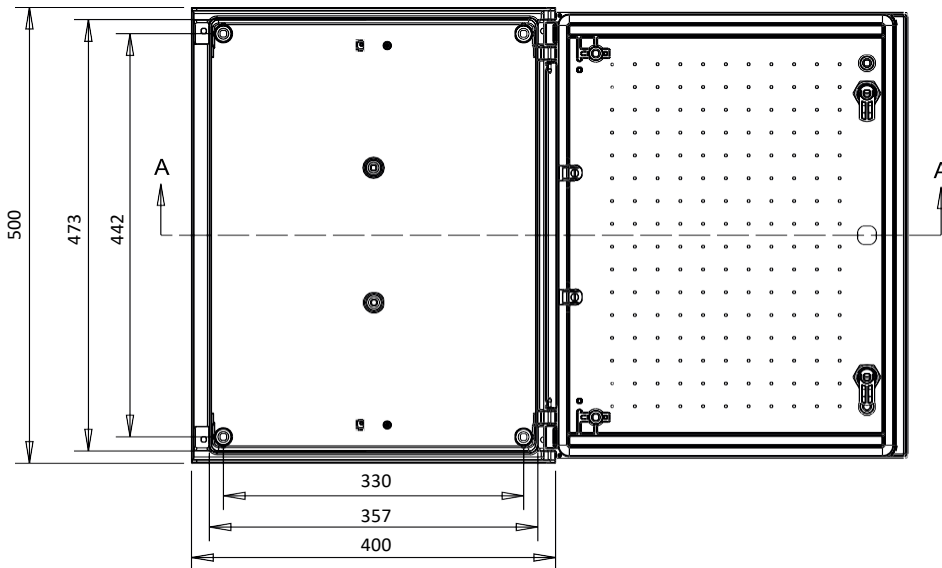
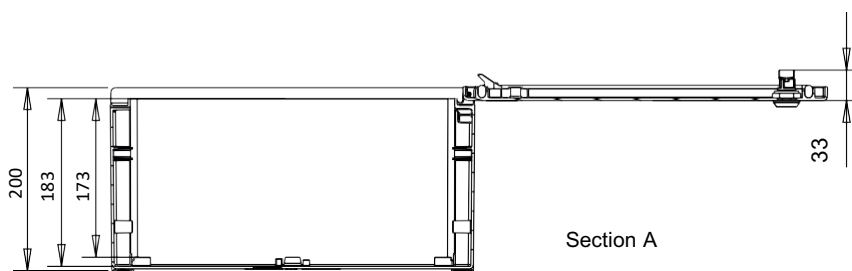
- Enclosures made from Fiber Glass Reinforced Polyester, moulded by hot compression.
- Colour Light Grey RAL 7035.
- Degree of protection IP 66 UNE 20324 (EN 60529).
- Self-extinguishibility: 960° test withstanding, Halogen free, double insulation and no electrical contact risks.
- Compliance with IEC62208 enclosure standard.
- Suitable for Indoor & Outdoor use.
- Anti- Intruder hinges system.
- UV Resistant and suitable for harsh environments
- Light weight provides an easy installation.
- 2 lock with double-bar insert for better protection.
- Large door opening (180°). Version with plain or glazed door.
- Accessories like Mounting Plate, Wall Brackets, Pole Mount Brackets, Pad Lock mount, Door Retainer Clip etc. are available on request.



Detailed Description:

Part No:	Description	Height*Width*Depth	Weight
NYS-WPE-542	WEATHER PROOF INDUSTRIAL ENCLOSURE	500*400*200 mm	5.25 kg

WEATHER PROOF MONOBLOC INDUSTRIAL ENCLOSURE



WEATHER PROOF MONOBLOC INDUSTRIAL ENCLOSURE

Electrical Specifications

Nominal tension Direct current up to: 1500 Vdc

Nominal tension Alternate current up to: 1000 Vac

Environmental Specifications

Minimum Temperature: -30° C

Maximum Temperature: +70° C

Compression Resistance: 100 Kg

IP Protection Rating: IP 66

IK Impact Resistance Degree: IK 10

Installation and Assembly

Indoor Installation: Yes

Outdoor Installation: Yes

Direct Floor Mounting: No

Wall Mounting: Yes

Pole Mounting: Yes

WEATHER PROOF MONOBLOC INDUSTRIAL ENCLOSURE

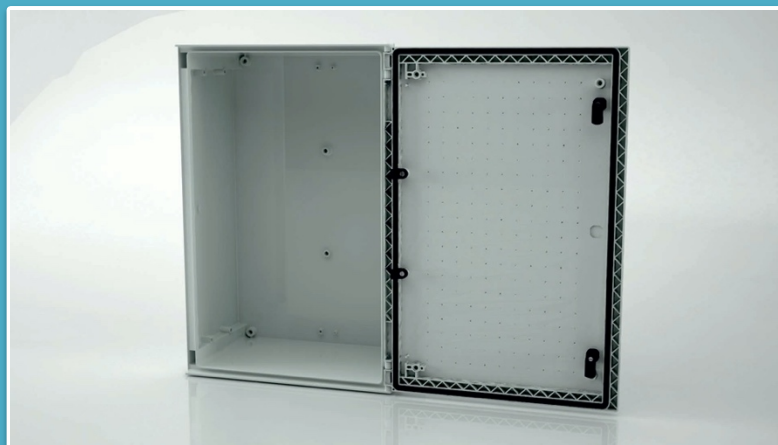
Ordering Information

Part No./Model No.	Description
NYS-WPE-542	Weather Proof Industrial Enclosure,500 mm(H)*400 mm(W)*200 mm(D)
WPE-MP-542	Galvanized Mounting Plate,460 mm(H)*348 mm(W)* 2 mm (T)
WPE-WB	Wall Brackets (4 Nos),67*28*25mm
WPE-PMB-X4	Pole Mount Bracket c/w Stainless Steel Strap
WPE-PL	Padlock Mount,64*40*20mm
WPE-DR	Door Retainer Clip,60*10*10mm

WEATHER PROOF MONOBLOC INDUSTRIAL ENCLOSURE

Features:

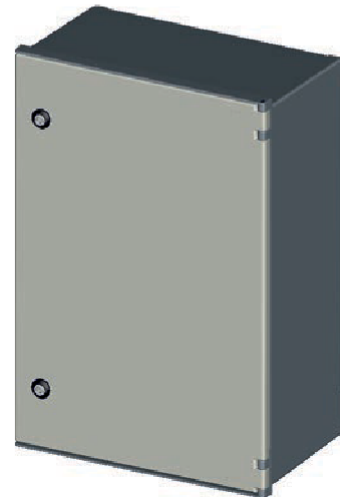
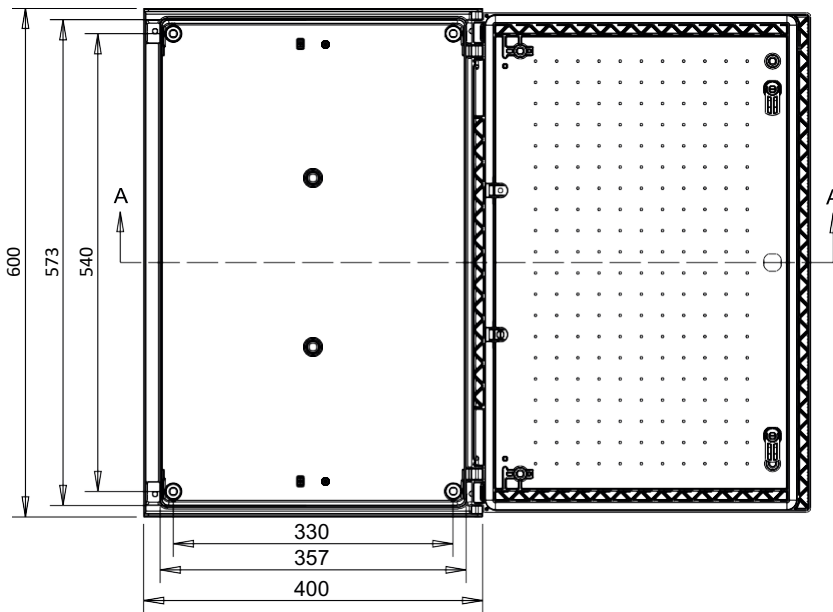
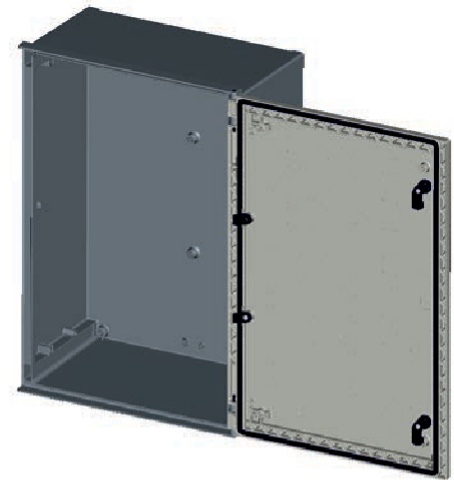
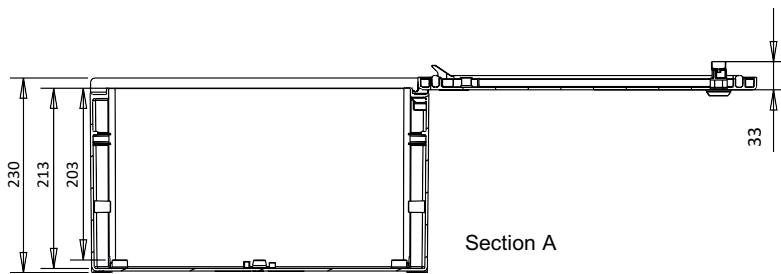
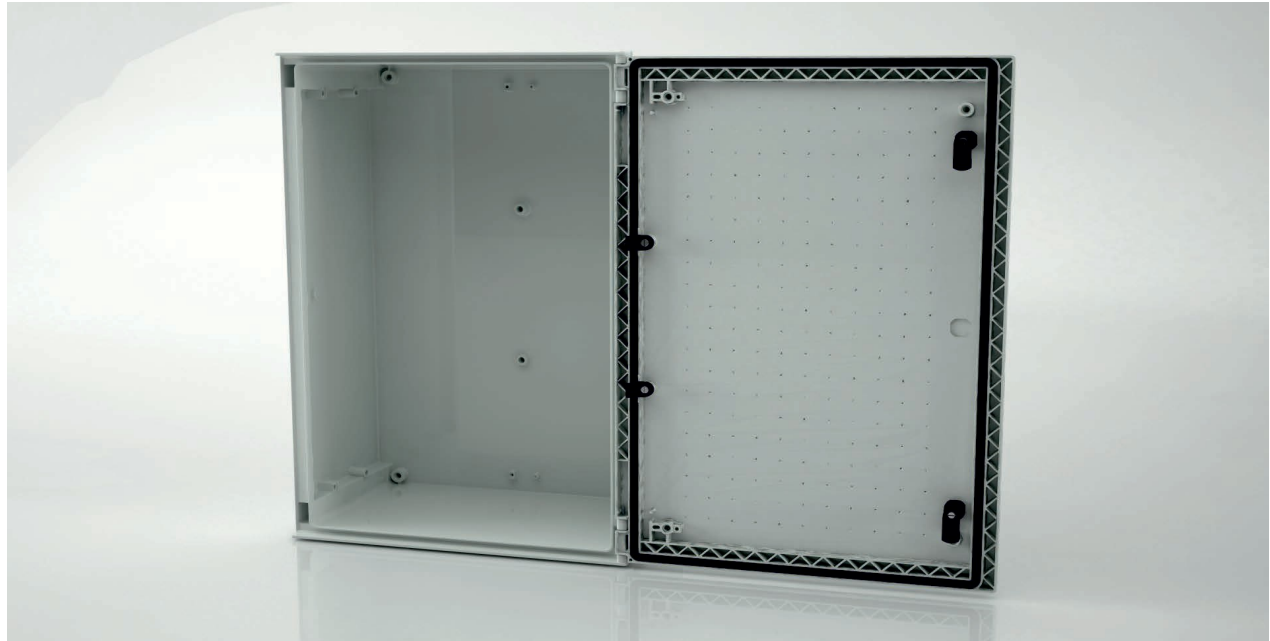
- Enclosures made from Fiber Glass Reinforced Polyester, moulded by hot compression.
- Colour Light Grey RAL 7035.
- Degree of protection IP 66 UNE 20324 (EN 60529).
- Self-extinguishability: 960° test withstanding, Halogen free, double insulation and no electrical contact risks.
- Compliance with IEC62208 enclosure standard.
- Suitable for Indoor & Outdoor use.
- Anti- Intruder hinges system.
- UV Resistant and suitable for harsh environments.
- Light weight provides an easy installation.
- 2 lock with double-bar insert for better protection.
- Large door opening (180°). Version with plain or glazed door.
- Accessories like Mounting Plate, Wall Brackets, Pole Mount Brackets, Pad Lock mount, Door Retainer Clip etc. are available on request.



Detailed Description:

Part No:	Description	Height*Width*Depth	Weight
NYS-WPE-6423	WEATHER PROOF INDUSTRIAL ENCLOSURE	600*400*230 mm	7.13 kg

WEATHER PROOF MONOBLOC INDUSTRIAL ENCLOSURE



WEATHER PROOF MONOBLOC INDUSTRIAL ENCLOSURE

Electrical Specifications

Nominal tension Direct current up to: 1500 Vdc

Nominal tension Alternate current up to: 1000 Vac

Environmental Specifications

Minimum Temperature: -30° C

Maximum Temperature: +70° C

Compression Resistance: 100 Kg

IP Protection Rating: IP 66

IK Impact Resistance Degree: IK 10

Installation and Assembly

Indoor Installation: Yes

Outdoor Installation: Yes

Direct Floor Mounting: No

Wall Mounting: Yes

Pole Mounting: Yes

WEATHER PROOF MONOBLOC INDUSTRIAL ENCLOSURE

Ordering Information

Part No./Model No.	Description
NYS-WPE-6423	Weather Proof Industrial Enclosure,600 mm(H)*400 mm(W)*230 mm(D)
WPE-MP-6423	Galvanized Mounting Plate, 558 mm(H)*348 mm(W)* 2 mm (T)
WPE-WB	Wall Brackets (4 Nos),67*28*25mm
WPE-PMB-X4	Pole Mount Bracket c/w Stainless Steel Strap
WPE-PL	Padlock Mount,64*40*20mm
WPE-DR	Door Retainer Clip,60*10*10mm

WEATHER PROOF MONOBLOC INDUSTRIAL ENCLOSURE

Features:

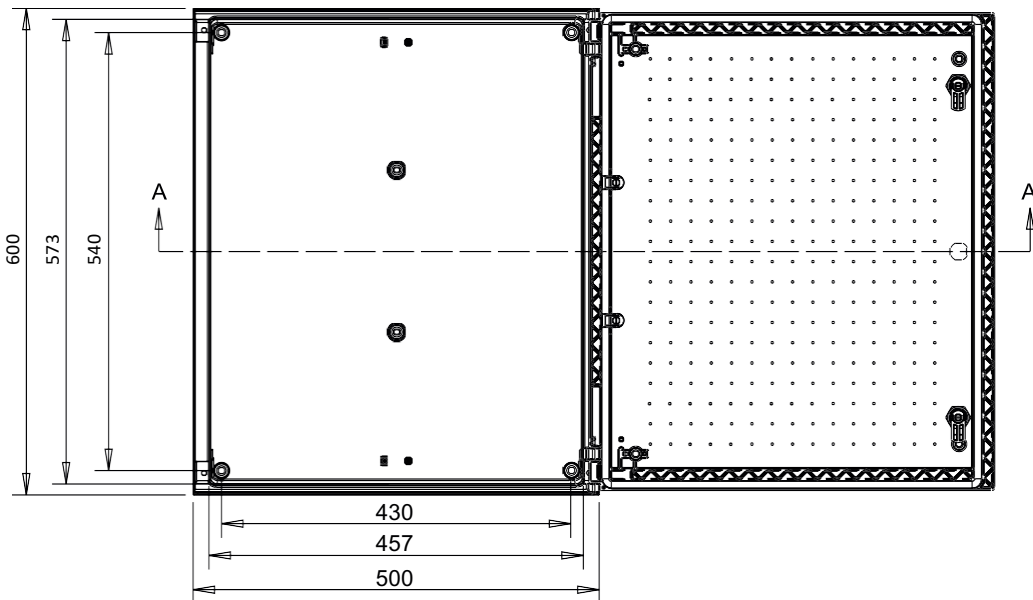
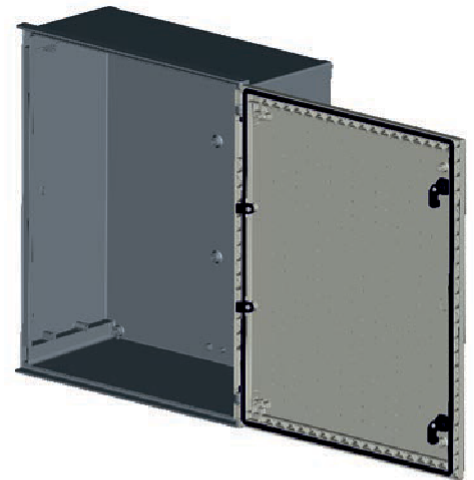
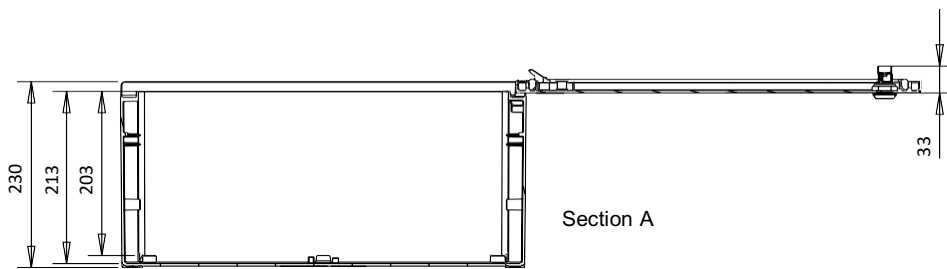
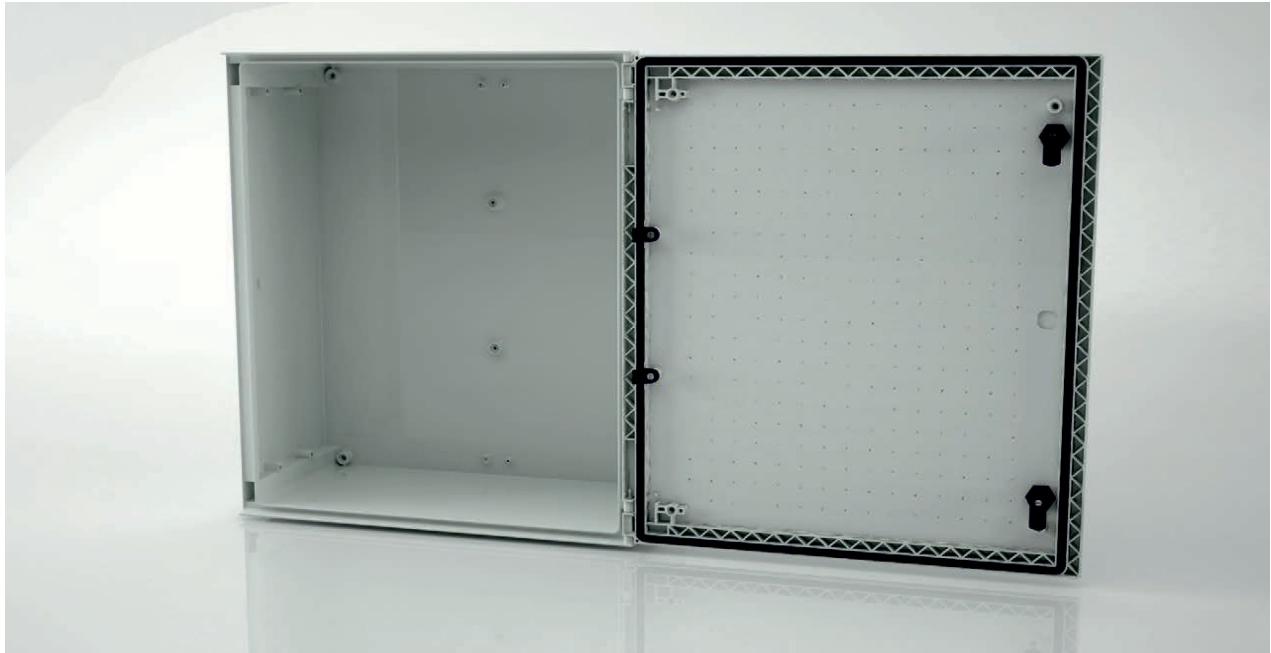
- Enclosures made from Fiber Glass Reinforced Polyester, moulded by hot compression.
- Colour Light Grey RAL 7035.
- Degree of protection IP 66 UNE 20324 (EN 60529).
- Self-extinguishability: 960° test withstanding, Halogen free, double insulation and no electrical contact risks.
- Compliance with IEC62208 enclosure standard.
- Suitable for Indoor & Outdoor use.
- Anti- Intruder hinges system.
- UV Resistant and suitable for harsh environments.
- Light weight provides an easy installation.
- 2 lock with double-bar insert for better protection.
- Large door opening (180°). Version with plain or glazed door.
- Accessories like Mounting Plate, Wall Brackets, Pole Mount Brackets, Pad Lock mount, Door Retainer Clip etc. are available on request.



Detailed Description:

Part No:	Description	Height*Width*Depth	Weight
NYS-WPE-6523	WEATHER PROOF INDUSTRIAL ENCLOSURE	600*500*230 mm	7.93 kg

WEATHER PROOF MONOBLOC INDUSTRIAL ENCLOSURE



WEATHER PROOF MONOBLOC INDUSTRIAL ENCLOSURE

Electrical Specifications

Nominal tension Direct current up to: 1500 Vdc

Nominal tension Alternate current up to: 1000 Vac

Environmental Specifications

Minimum Temperature: -30° C

Maximum Temperature: +70° C

Compression Resistance: 100 Kg

IP Protection Rating: IP 66

IK Impact Resistance Degree: IK 10

Installation and Assembly

Indoor Installation: Yes

Outdoor Installation: Yes

Direct Floor Mounting: No

Wall Mounting: Yes

Pole Mounting: Yes

WEATHER PROOF MONOBLOC INDUSTRIAL ENCLOSURE

Ordering Information

Part No./Model No.	Description
NYS-WPE-6523	Weather Proof Industrial Enclosure, 600 mm(H)*500 mm(W)*230 mm(D)
WPE-MP-6523	Galvanized Mounting Plate, 558 mm(H)*448 mm(W)* 2 mm (T)
WPE-WB	Wall Brackets (4 Nos), 67*28*25mm
WPE-PMB-X6	Pole Mount Bracket c/w Stainless Steel Strap
WPE-PL	Padlock Mount, 64*40*20mm
WPE-DR	Door Retainer Clip, 60*10*10mm

WEATHER PROOF MONOBLOC INDUSTRIAL ENCLOSURE

Features:

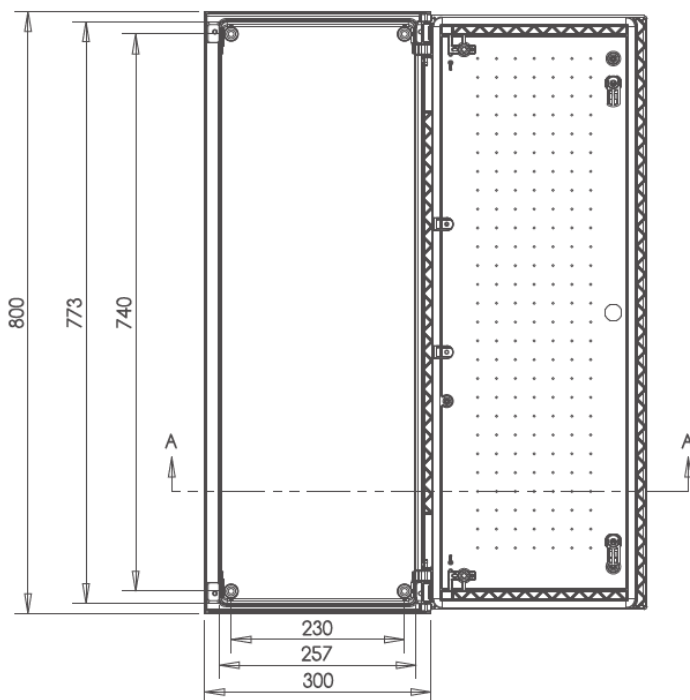
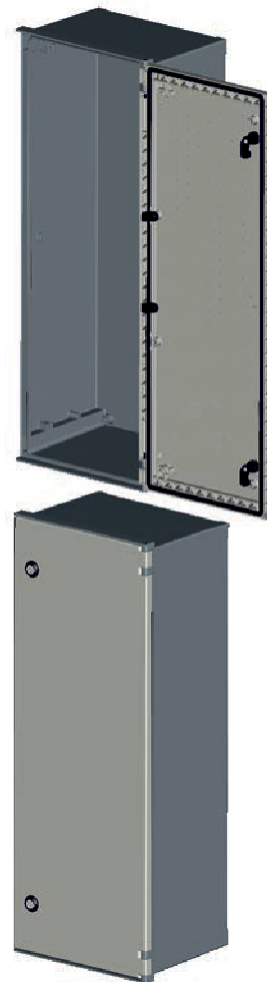
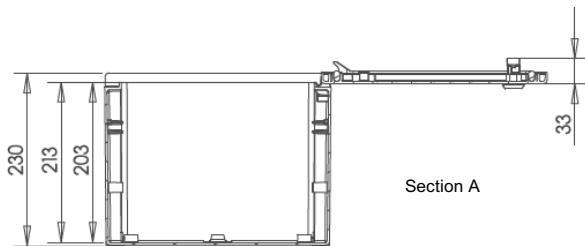
- Enclosures made from Fiber Glass Reinforced Polyester, moulded by hot compression.
- Colour Light Grey RAL 7035.
- Degree of protection IP 66 UNE 20324 (EN 60529).
- Self-extinguishability: 960° test withstanding, Halogen free, double insulation and no electrical contact risks.
- Compliance with IEC62208 enclosure standard.
- Suitable for Indoor & Outdoor use.
- Anti- Intruder hinges system.
- UV Resistant and suitable for harsh environments
- Light weight provides an easy installation.
- 2 lock with double-bar insert for better protection.
- Large door opening (180°). Version with plain or glazed door.
- Accessories like Mounting Plate, Wall Brackets, Pole Mount Brackets, Pad Lock mount, Door Retainer Clip etc. are available on request.



Detailed Description:

Part No:	Description	Height*Width*Depth	Weight
NYS-WPE-8323	WEATHER PROOF INDUSTRIAL ENCLOSURE	800*300*230 mm	6.40 kg

WEATHER PROOF MONOBLOC INDUSTRIAL ENCLOSURE



WEATHER PROOF MONOBLOC INDUSTRIAL ENCLOSURE

Electrical Specifications

Nominal tension Direct current up to: 1500 Vdc

Nominal tension Alternate current up to: 1000 Vac

Environmental Specifications

Minimum Temperature: -30° C

Maximum Temperature: +70° C

Compression Resistance: 100 Kg

IP Protection Rating: IP 66

IK Impact Resistance Degree: IK 10

Installation and Assembly

Indoor Installation: Yes

Outdoor Installation: Yes

Direct Floor Mounting: No

Wall Mounting: Yes

Pole Mounting: Yes

WEATHER PROOF MONOBLOC INDUSTRIAL ENCLOSURE

Ordering Information

Part No./Model No.	Description
NYS-WPE-8323	Weather Proof Industrial Enclosure, 800 mm(H)*300 mm(W)*230 mm(D)
WPE-MP-8323	Galvanized Mounting Plate, 756 mm(H)*248 mm(W)* 2 mm (T)
WPE-WB	Wall Brackets (4 Nos), 67*28*25mm
WPE-PMB-X3	Pole Mount Bracket c/w Stainless Steel Strap
WPE-PL	Padlock Mount, 64*40*20mm
WPE-DR	Door Retainer Clip, 60*10*10mm

WEATHER PROOF MONOBLOC INDUSTRIAL ENCLOSURE

Features:

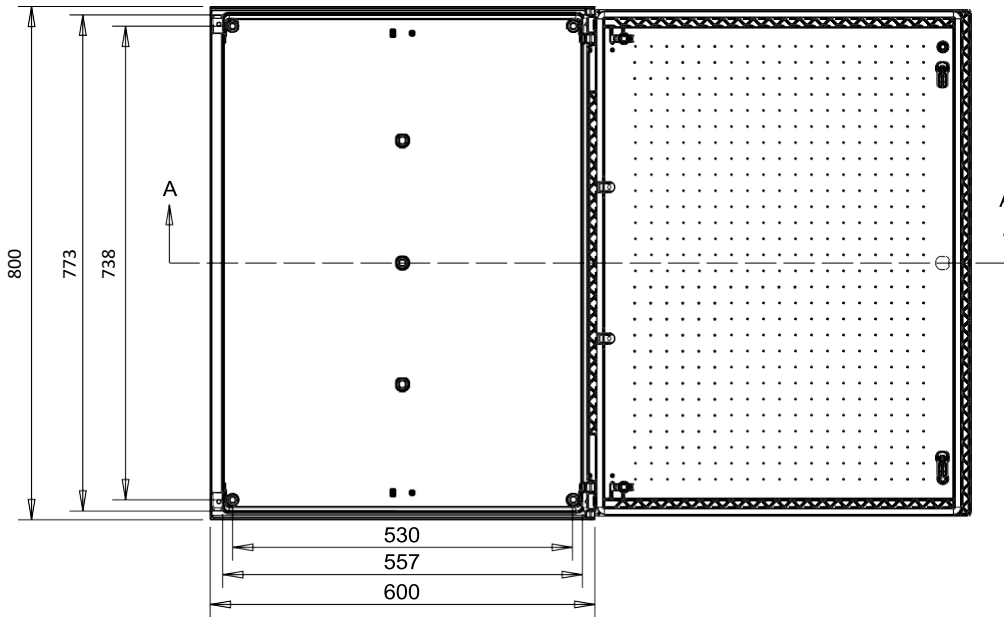
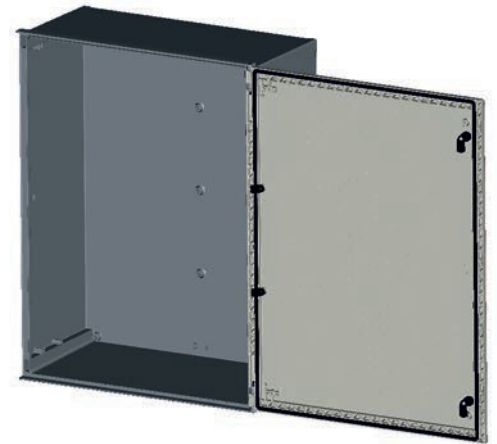
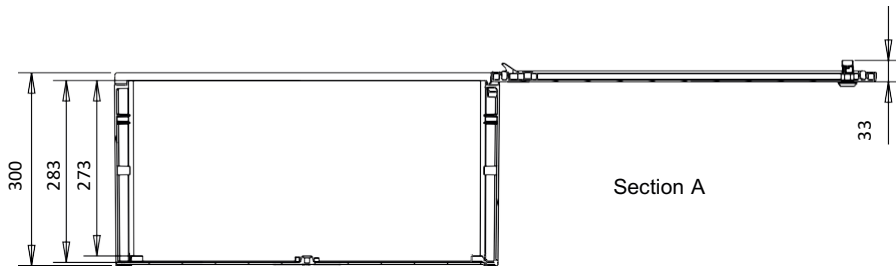
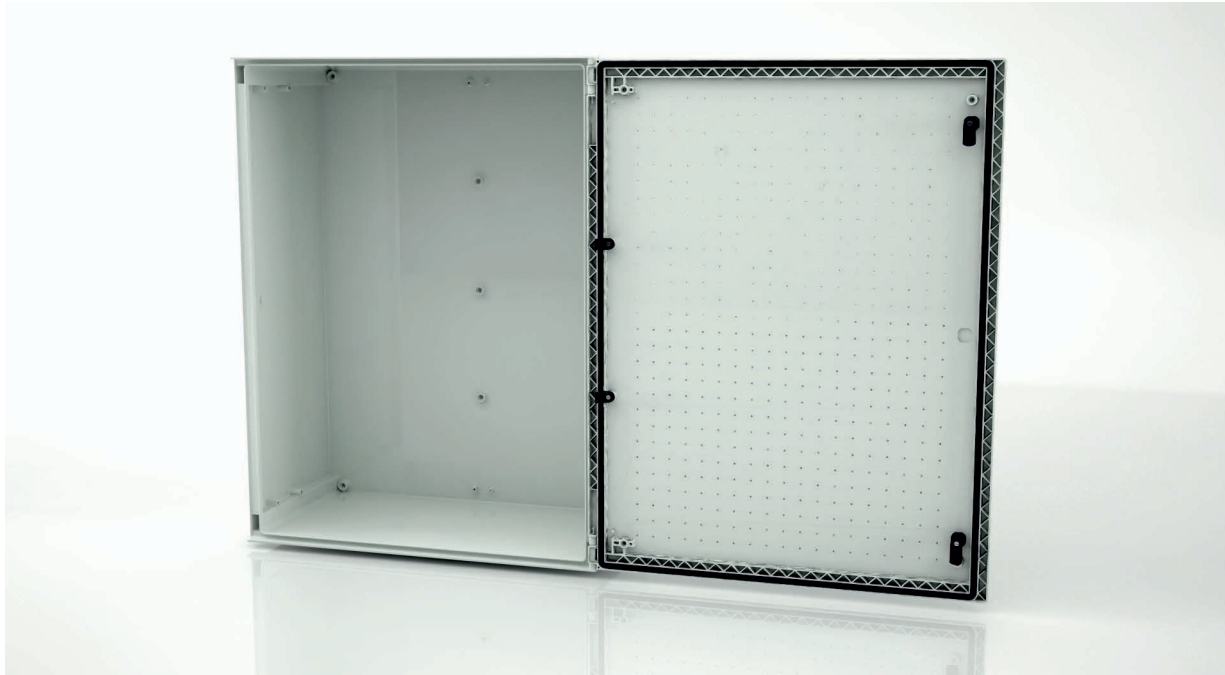
- Enclosures made from Fiber Glass Reinforced Polyester, moulded by hot compression.
- Colour Light Grey RAL 7035.
- Degree of protection IP 66 UNE 20324 (EN 60529).
- Self-extinguishability: 960° test withstanding, Halogen free, double insulation and no electrical contact risks.
- Compliance with IEC62208 enclosure standard.
- Suitable for Indoor & Outdoor use.
- Anti- Intruder hinges system.
- UV Resistant and suitable for harsh environments.
- Light weight provides an easy installation.
- 2 lock with double-bar insert for better protection.
- Large door opening (180°). Version with plain or glazed door.
- Accessories like Mounting Plate, Wall Brackets, Pole Mount Brackets, Pad Lock mount, Door Retainer Clip etc. are available on request.



Detailed Description:

Part No:	Description	Height*Width*Depth	Weight
NYS-WPE-863	WEATHER PROOF INDUSTRIAL ENCLOSURE	800*600*300 mm	12.65 kg

WEATHER PROOF MONOBLOC INDUSTRIAL ENCLOSURE



WEATHER PROOF MONOBLOC INDUSTRIAL ENCLOSURE

Electrical Specifications

Nominal tension Direct current up to: 1500 Vdc

Nominal tension Alternate current up to: 1000 Vac

Environmental Specifications

Minimum Temperature: -30° C

Maximum Temperature: +70° C

Compression Resistance: 100 Kg

IP Protection Rating: IP 66

IK Impact Resistance Degree: IK 10

Installation and Assembly

Indoor Installation: Yes

Outdoor Installation: Yes

Direct Floor Mounting: No

Wall Mounting: Yes

Pole Mounting: Yes

WEATHER PROOF MONOBLOC INDUSTRIAL ENCLOSURE

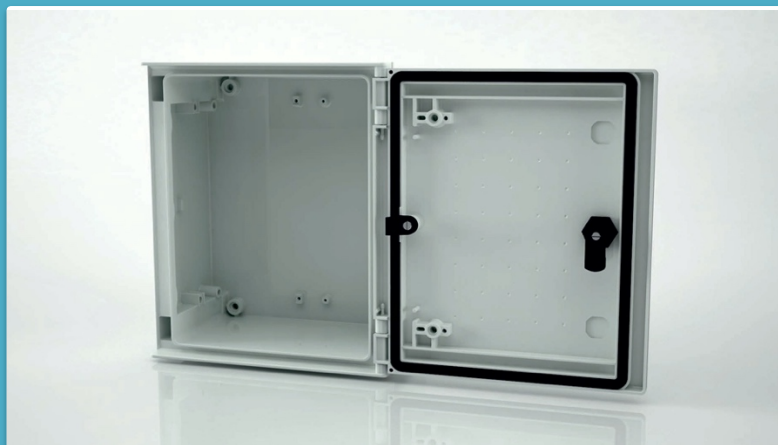
Ordering Information

Part No./Model No.	Description
NYS-WPE-863	Weather Proof Industrial Enclosure,800 mm(H)*600 mm(W)*300 mm(D)
WPE-MP-863	Galvanized Mounting Plate, 756 mm(H)*548 mm(W)* 2 mm (T)
WPE-WB	Wall Brackets (4 Nos),67*28*25mm
WPE-PMB-X6	Pole Mount Bracket c/w Stainless Steel Strap
WPE-PL	Padlock Mount,64*40*20mm
WPE-DR	Door Retainer Clip,60*10*10mm

WEATHER PROOF MONOBLOC INDUSTRIAL ENCLOSURE

Features:

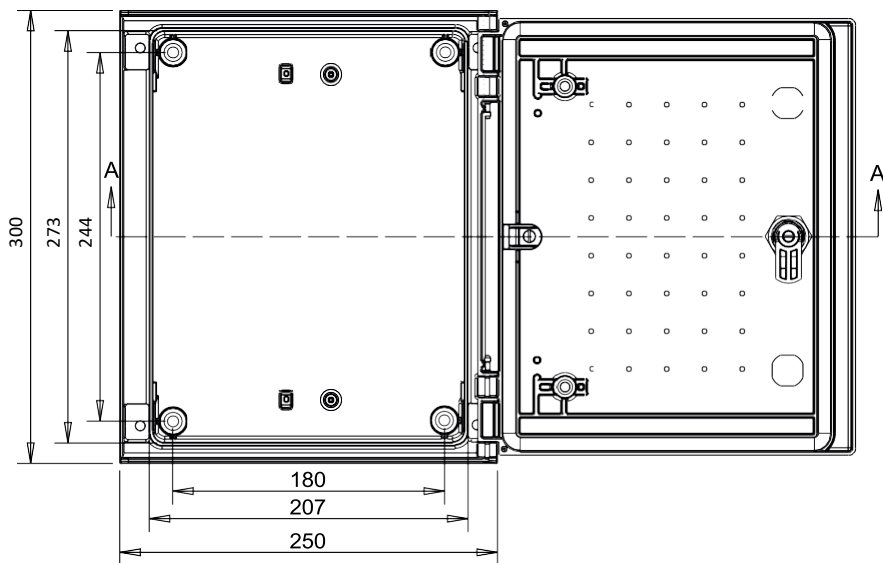
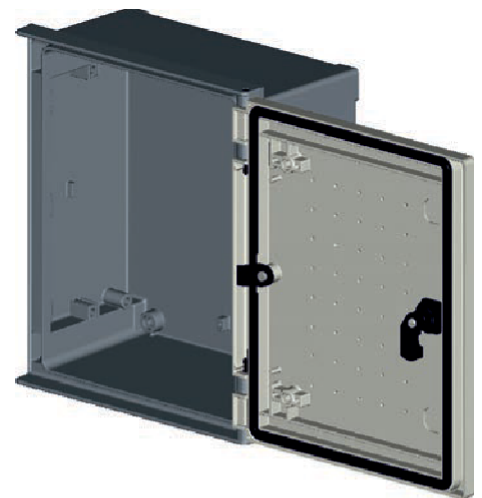
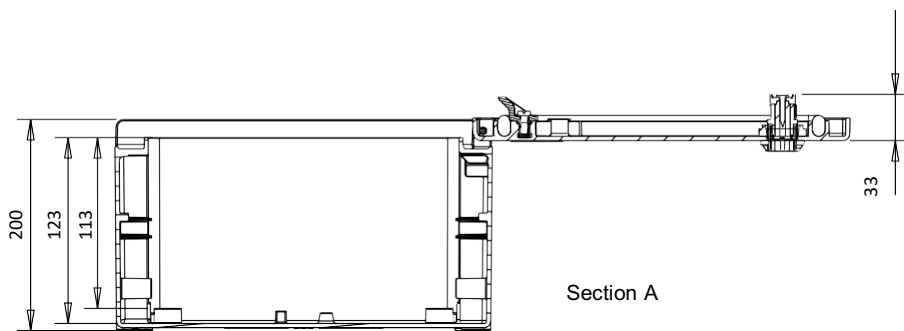
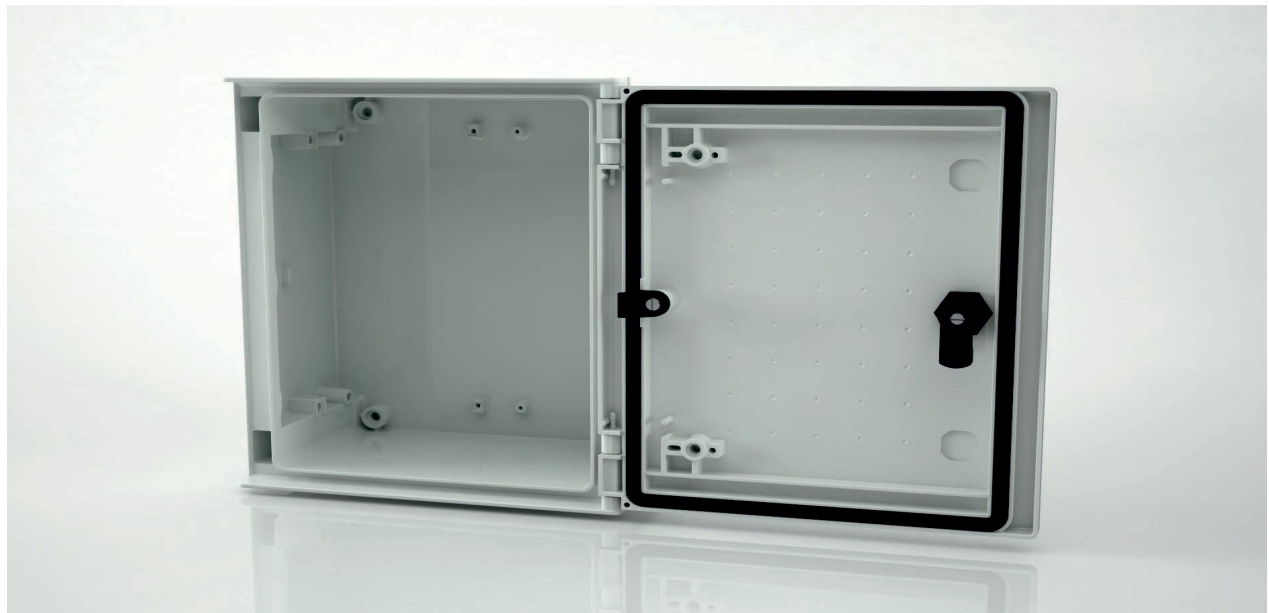
- Enclosures made from Fiber Glass Reinforced Polyester, moulded by hot compression.
- Colour Light Grey RAL 7035.
- Degree of protection IP 66 UNE 20324 (EN 60529).
- Self-extinguishability: 960° test withstanding, Halogen free, double insulation and no electrical contact risks.
- Compliance with IEC62208 enclosure standard.
- Suitable for Indoor & Outdoor use.
- Anti- Intruder hinges system.
- UV Resistant and suitable for harsh environments.
- Light weight provides an easy installation.
- Available in 1 lock with double-bar insert.
- Large door opening (180°). Version with plain or glazed door.
- Accessories like Mounting Plate, Wall Brackets, Pole Mount Brackets, Pad Lock mount, Door Retainer Clip etc. are available on request.



Detailed Description:

Part No:	Description	Height*Width*Depth	Weight
NYS-WPE-32514	WEATHER PROOF INDUSTRIAL ENCLOSURE	300*250*140 mm	1.93 kg

WEATHER PROOF MONOBLOC INDUSTRIAL ENCLOSURE



WEATHER PROOF MONOBLOC INDUSTRIAL ENCLOSURE

Electrical Specifications

Nominal tension Direct current up to: 1500 Vdc

Nominal tension Alternate current up to: 1000 Vac

Environmental Specifications

Minimum Temperature: -30° C

Maximum Temperature: +70° C

Compression Resistance: 100 Kg

IP Protection Rating: IP 66

IK Impact Resistance Degree: IK 10

Installation and Assembly

Indoor Installation: Yes

Outdoor Installation: Yes

Direct Floor Mounting: No

Wall Mounting: Yes

Pole Mounting: Yes

WEATHER PROOF MONOBLOC INDUSTRIAL ENCLOSURE

Ordering Information

Part No./Model No.	Description
NYS-WPE-32514	Weather Proof Industrial Enclosure,300 mm(H)*250 mm(W)*140 mm(D)
WPE-MP-32514	Galvanized Mounting Plate, 262 mm(H)*198 mm(W)* 2 mm (T)
WPE-WB	Wall Brackets (4 Nos),67*28*25mm
WPE-PMB-X3	Pole Mount Bracket c/w Stainless Steel Strap
WPE-PL	Padlock Mount,64*40*20mm
WPE-DR	Door Retainer Clip,60*10*10mm