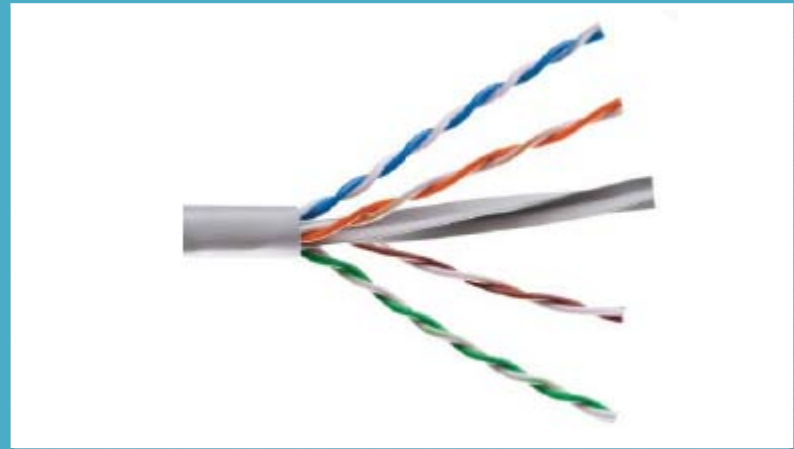


CAT 6 UTP CABLE - LSZH

Features:

- Rip Cord and LSZH Outer Jacket
- Fire Rating Compliant to IEC 60332-1
- 4 Pair 23 AWG Standard
- HDPE Insulated
- Suitable for Indoor Applications
- High Speed Data, Voice & Video Signal
- Complies to ANSI-TIA 568.2-D
- ISO/IEC 11801 for Class E
- UL Listed and ETL Verified



High Speed Gigabit Ethernet UTP 250 MHz Class E / Category 6 Cable Consists of HDPE Insulated 8 x 23AWG Solid Bare Electrolytic Grade Copper Conductors Twisted as 4 Pairs, Rip Cord and LSZH Outer Jacket. These Structured Cable Suitable for Gigabit Ethernet (1000Base-T) Requirement for Applications such as High Speed Data, Voice & Video Signals over LANs, Server Farms and Other Bandwidth Sensitive Indoor Applications. This cable guarantees Category 6 performance ensuring maximum network speed, data throughput and efficiency.

CAT 6 UTP CABLE - LSZH

Mechanical Specifications

Conductor AWG	:	23
Conductor Material	:	Solid bare Copper
Conductor Count	:	8
Insulation Material	:	High Density Polyethylene
Pairing	:	2 insulated conductor twisted together
No. of pair	:	4
Color Code		
Pair #1	:	Blue White and Blue
Pair #2	:	Orange White and Orange
Pair #3	:	Green White and Green
Pair #4	:	Brown White and Brown
Drain Wire	:	No
Outer Sheath	:	LSZH
Outer Sheath Color	:	Grey – RAL 7035
Overall cable diameter	:	6.0±0.2mm
Sequential Marking	:	At every meter
RIP Cord	:	Yes
Cross filler	:	Polyolefin

Electrical

Characteristic Impedance	:	100W±15%
Conductor Resistance(DC)	:	<9.38W/100m
Resistance Unbalance	:	5% max
Mutual Capacitance	:	<5% max
Capacitance Unbalance	:	330pF/100m
Delay Skew	:	<45ns
NVP	:	69%
Bending radius	:	<4X cable diameter
Pulling force	:	11.5kg

CAT 6 UTP CABLE - LSZH

Maximum propagation delay @250MHz	:	490ns/90m
Maximum Attenuation @250Mhz & 90m	:	31.1dB
Return loss@250MHz & 90m	:	10.0
NEXT@250MHz & 90m	:	35.3
PS NEXT @250MHz & 90m	:	32.7
ACRF(ELFEXT) @250MHz & 90m	:	16.2
PSACRF @250MHz & 90m	:	13.2

Environmental

Storage Temperature	:	-20° C to +70° C
Operating Temperature	:	-10° C to +60° C
Flame Properties		
Flammability Test	:	IEC 60332-1
Acid Gas Emission Test	:	IEC 60754-1
Smoke Density Test	:	ASTM 2843
Packing	:	Reel of 305 Meters in Plane Box
Printing	:	YY/MM Length in Meters
Nominal Weight	:	14.0Kg

Compliances /

UL Listed
 ETL Verified
 RoHS Certified

Ordering

Part No:	Description
NYS-CCAB-CAT6-LSZH	High Speed Gigabit Ethernet UTP 250 MHz Class E LSZH Cable, C6