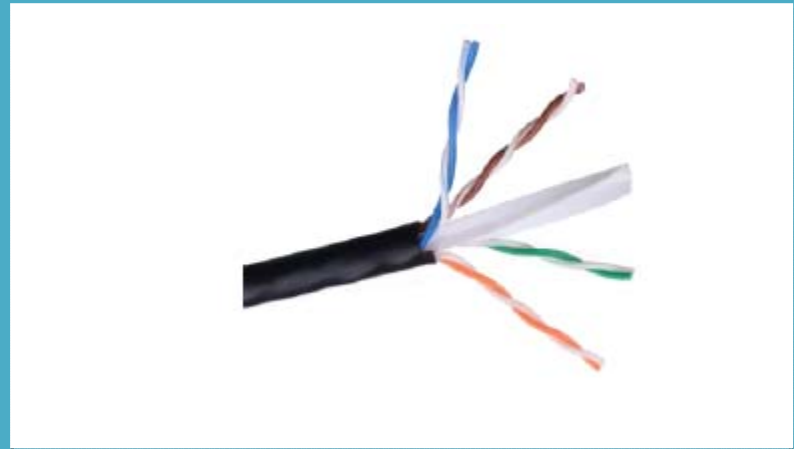


## CAT 6 UTP OUTDOOR CABLE - PE

---

### Features:

- Strain Relief
- 4 Pair 23 AWG Standard
- HDPE Insulated
- Suitable for Outdoor Applications
- High Speed Data, Voice & Video Signal
- RoHS Compliant
- Complies to ANSI-TIA 568.2-D & ISO/IEC 11801 for Class E
- UL Listed and ETL Verified



High Speed Gigabit Ethernet UTP 250 MHz Class E / Category 6 Cable Consists of HDPE Insulated 8 x 23AWG Solid Bare Electrolytic Grade Copper Conductors Twisted as 4 Pairs, Rip Cord and PE Outer Jacket. These Structured Cable Suitable for Gigabit Ethernet (1000Base-T) Requirement for Applications such as High Speed Data, Voice & Video Signals over LANs, Server Farms and Other Bandwidth Sensitive Outdoor Applications. This Cable Guarantees Category 6 Performance Ensuring Maximum Network Speed, Data Throughput and Efficiency.

## CAT 6 UTP OUTDOOR CABLE - PE

### Mechanical Specifications

Conductor AWG	:	23
Conductor Material	:	Solid bare Copper
Conductor Count	:	8
Insulation Material	:	High Density Polyethylene
Pairing	:	2 insulated conductor twisted together
No. of pair	:	4
Color Code		
Pair #1	:	Blue White and Blue
Pair #2	:	Orange White and Orange
Pair #3	:	Green White and Green
Pair #4	:	Brown White and Brown
Drain Wire	:	No

### Electrical Specifications

Characteristic Impedance	:	100W $\pm$ 15%
Conductor Resistance(DC)	:	£9.38W/100m
Resistance Unbalance	:	5% max
Mutual Capacitance	:	<5.6nF/100m
Capacitance Unbalance	:	330pF/100m
Delay Skew	:	<45ns
NVP	:	69%
Bending radius	:	<4X cable diameter
Pulling force	:	11.5kg
Maximum propagation delay @250MHz	:	490ns/90m
Maximum Attenuation @250Mhz & 90m	:	35.9dB
Return loss@250MHz & 90m	:	8.0dB
NEXT@250MHz & 90m	:	33.1dB
PS NEXT @250MHz & 90m	:	30.2dB
ACRF(ELFEXT) @250MHz & 90m	:	15.3dB
PSACRF @250MHz & 90m	:	12.3dB

## CAT 6 UTP OUTDOOR CABLE - PE

---

### Environmental Specifications

---

Operating Temperature: -20° C to +60° C

Storage Temperature: -20° C to +60° C

### Compliances / Certifications

---

UL Listed

ETL Verified

### Ordering Information

---

Part No:	Description
NYS-CCAB-CAT6-OD	High Speed Gigabit Ethernet UTP 250 MHz Class E PE Cable, C6

---