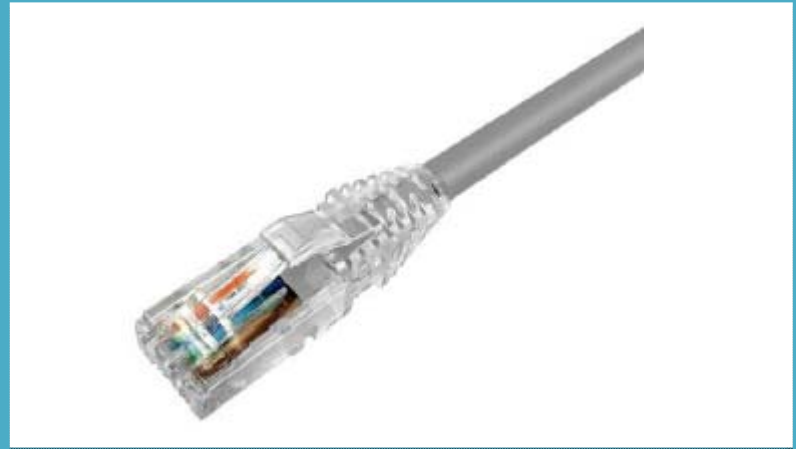


## CAT 6A U-UTP PATCH CORD

---

### Features:

- High Speed 10G
- Strain Relief
- Plug Latch Protection Cap
- 4 Pair 26 AWG Standard
- High Grade RJ45 Connector
- Soft Latch-cover design for easy depression
- Available in 1m, 2m, 3m, 5m, 10m, 15m, 20m & 25m
- Complies to ANSI/TIA 568.2-D
- Available in Grey Color



High Speed 10 Gigabit U/UTP Patch Cable Grey, LSZH, C6A delivers optimal transmission and networking performance with reduced insertion loss and Alien Crosstalk. They are high performance components available in broad range of lengths and designed to meet or exceed all Cat6A specifications. 26 AWG conductors are securely mated with RJ45 plug to deliver superior performance.

## CAT 6A U-UTP PATCH CORD

### Mechanical Specifications

Conductor AWG	:	26
Conductor Material	:	Stranded Bare Copper
Type of Cable	:	U/UTP
Number of Pairs	:	4
Application	:	Indoor
Insulation Diameter	:	1.05±0.05mm
Insulation Material	:	Foam Skin PE
Insulation Thickness	:	0.26mm
Jacket Type	:	LSZH
Cable Diameter	:	6.2±0.02mm
Jacket color	:	Grey

### Electrical Specifications

Mutual Capacitance	:	5.6 nF per 100 m
Conductor DC Resistance	:	14Ω / 100m
Capacitance Unbalance	:	330 pF per 100 m
Resistance Unbalance	:	4%
Impedance	:	100Ω ± 15%
Frequency	:	500MHz
Maximum Insertion Loss	:	54.4
Minimum NEXT	:	28.4 - 29.8
Minimum Return loss	:	9.5
Minimum ACR-F	:	13.8
Minimum PSNEXT	:	31.8
Minimum PSACRF	:	10.8
Minimum TCL	:	23
Minimum Coupling Attenuation	:	41
Minimum PSANEXT	:	52
Minimum PSAACRF	:	24.2

# CAT 6A U-UTP PATCH CORD

---

## Environmental Specifications

---

Operating Temperature: -10° C to +60° C

Storage Temperature: -20° C to +70° C

## Compliances / Certifications

---

Complies to ANSI/TIA 568.2-D

## Ordering Information

---

Part No:	Description
NYS-CPC-CAT6A-UUTP-XX	High Speed 10 Gigabit 26AWG U/UTP Patch Cord Grey, LSZH, C6A  01 / 02 / 03 / 05 / 10 / 20 / 25 = METER LENGTH  E.g.: NYS-CPC-CAT6A-UUTP-01

---